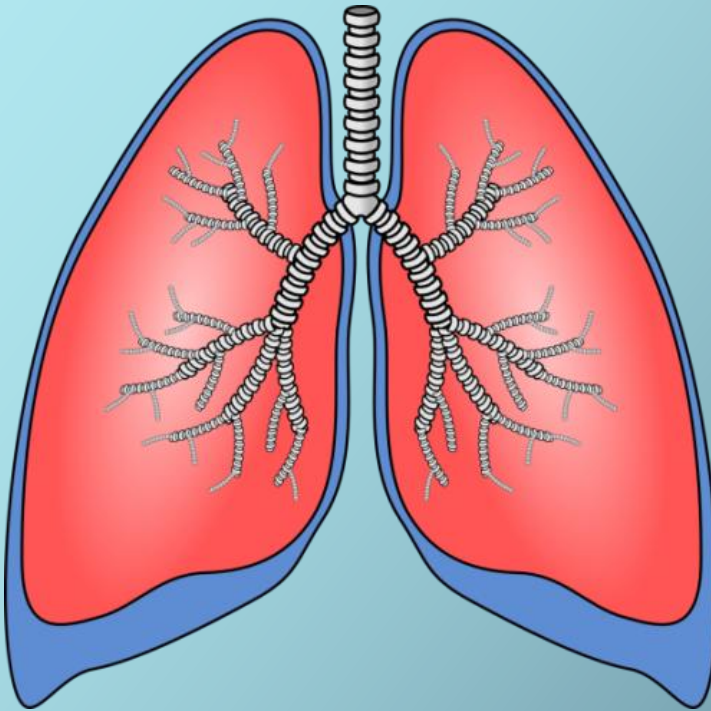


Clinicopathological Conference of Thoracic Pathology 2025/2026



SCHEDULED
(from 3 to 5 p.m.)

- ❖ October 27
- ❖ November 25
- ❖ December 18
- ❖ January 27
- ❖ February 24
- ❖ March 26
- ❖ April 30
- ❖ May 26
- ❖ June 16

Details regarding the venue of each individual conference will be provided at a later date.

Università degli Studi di Padova

Scuole di Specializzazione in:

Anatomia Patologica

Malattie dell' Apparato Respiratorio

Chirurgia Toracica

Corso di Dottorato di Ricerca in

Medicina Specialistica Traslazionale "G.B. Morgagni"



**Dipartimento di Scienze
Cardio-Toraco-Vascolari e
Sanità Pubblica**